

Pawnbroker Pawn Shop Software

Introduction

Scroll down for additional pages.

Enlarge the screen and
magnify for better viewing.



About PPSS = Producing Profits by Selling Services

P
P
S
S

Cash Checks

Track check status. Auto-convert bounced checks to loans. Assess penalties and/or higher interest rates.



Consignment

Take consignments. Increase sales without cash outlay.



Layaways

Sell items using installment payments with delivery of purchased goods upon payment of the full amount.



Pawns

PPSS automatically computes loan amount, 6 fees & interest. The program supports L.E.A.D.S. and guns on hold. PPSS includes a gold-loan calculator and customized pawn forms may be used.



Payday Loans

Track payday loans, payments and outstanding balances. Charge a flat fee or interest. Assess penalties and/or higher interest rates for past-due loans.



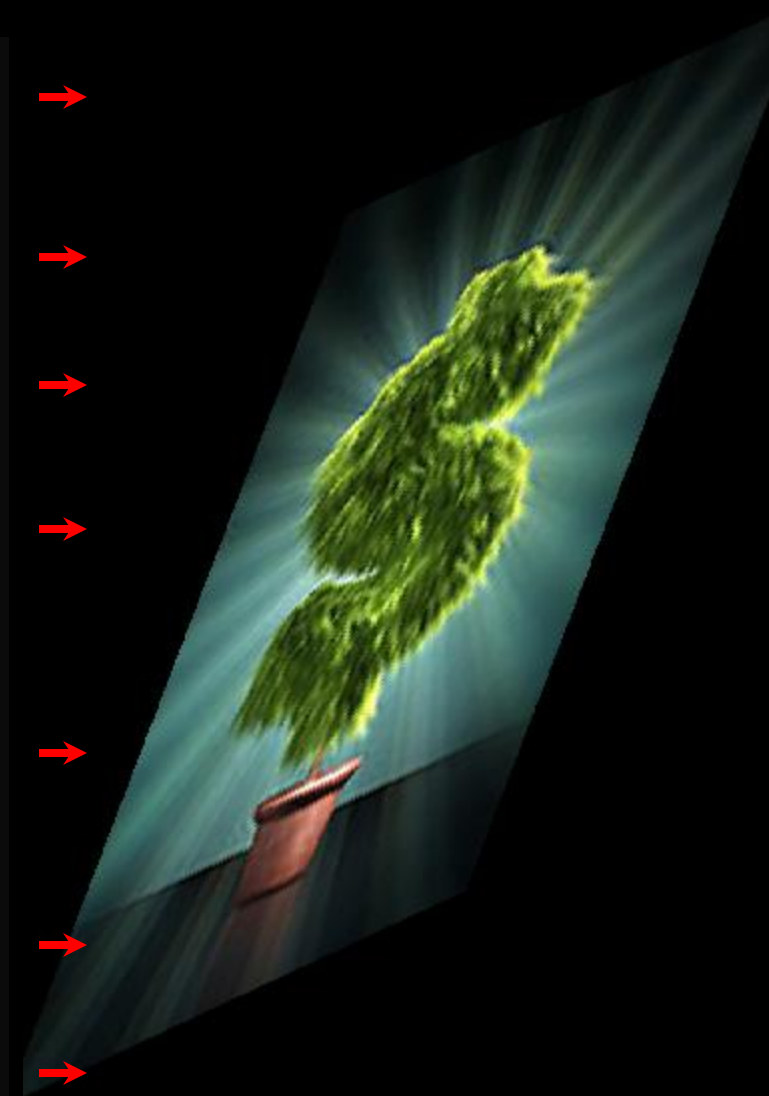
Rentals

Make money on idle inventory items by renting them out.



Resale

Track inventory, Adjust prices. Apply discounts. View reports of resale items only.



“Convert walk-ins to repeat cash-paying customers 7 different ways.”

The **NEW** PPSS - Designed to Bring Information and Function to the Top!

“New eye appeal for a better work environment”

User Interface

Function Keys

For fast access to the most important functions

Lists

Easy-to-read presentation of records

Quick Links

More quick access to important details

Work Areas

Easily switch screens or ‘work areas’

Menus

Function & Info related to the selected Work Area

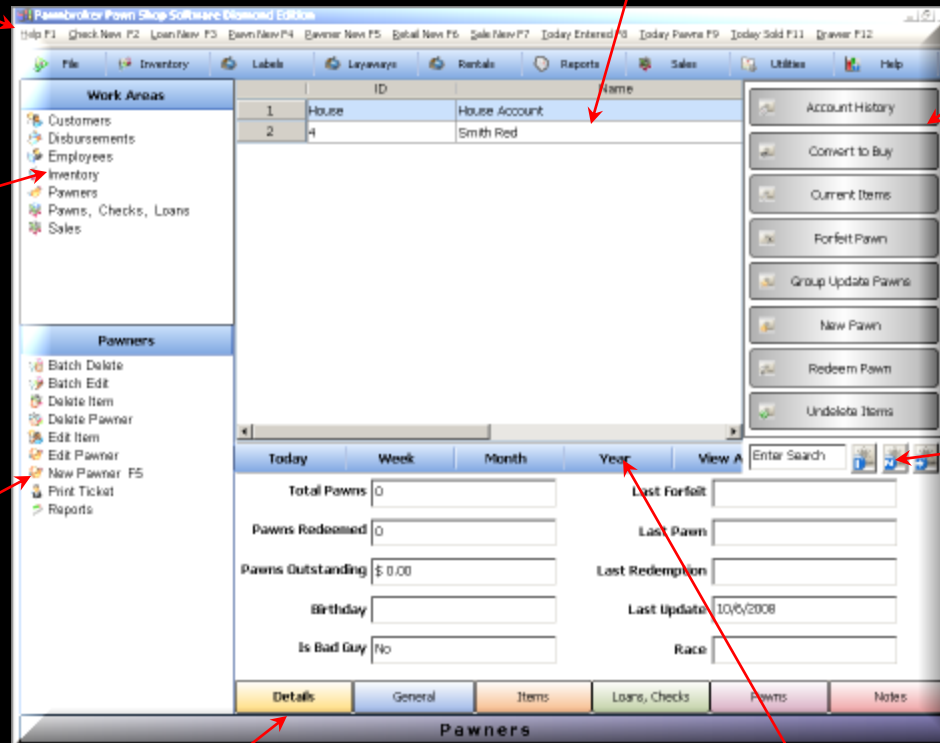
Easy Search

Information Screens

Colorful tabs lead to more information

Time Sort

View records for Today, This Week, etc.



User Interface Overview

(Click anywhere to advance.)



Use **Function Keys** for quick reference.

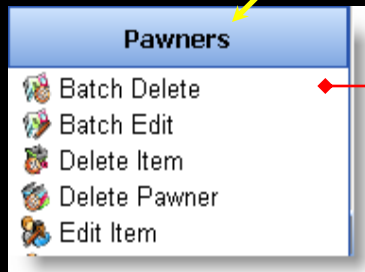


Selecting a **Work Area**

... presents lists in the **Main Table**

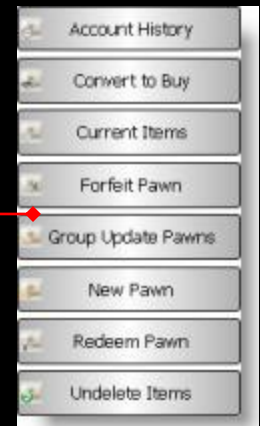
	ID	Name
1	8	Brokaw Tom
2	9	Rudolph Edward

(Selecting **Pawns** shows a list of pawners, e.g.)



Options related to the selected **Work Area** are displayed.

Click these buttons for **Quick Access** to functions & information.



User Interface Overview (cont.)



Access Program Features from the **Main Menu**.
(Go to **File > Program Setup** to configure PPSS for your business.)

	ID	Name
1	8	Brokaw Tom
2	9	Rudolph Edward

Click on a record to select it.

Double click to edit it.



(Click to show records only for Today, This Week, etc.)

Selecting a record displays record information here...

A screenshot of the record details form for 'Brokaw Tom'. The form contains several fields: 'Total Pawns' (2), 'Pawns Redeemed' (0), 'Pawns Outstanding' (\$ 0.00), 'Birthday' (9/25/1988), 'Is Bad Guy' (No), 'Last Forfeit', 'Last Pawn' (9/25/2008), 'Last Redemption', 'Last Update' (9/25/2008), and 'Race'. At the bottom, there are six colored tabs: 'Details' (yellow), 'General' (blue), 'Items' (orange), 'Loans, Checks' (green), 'Pawns' (purple), and 'Notes' (pink). A red arrow points from the text 'Selecting a record displays record information here...' to the 'Total Pawns' field.

Colored tabs open others screens of information



"Every important business fact and software function is front and center in PPSS."

Pawns in PPSS



PPSS provides complete pawn management including L.E.A.D.S. and Police Reporting.

One-Time ~ Lost Ticket ~ Daily Late
Gun ~ One-Time Late ~ Per Loan Period

Fees

Police

Auto generate reports within PPSS.

Auto upload transaction data in PPSS.

L.E.A.D.S.

Forfeits

Convert expired pawns to loans.

An editable pawn form is included or we can customize a form.

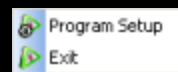
Pawn Tickets



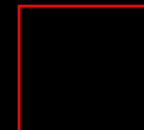
Cash Checks



Click on File



Click Program Setup



Click the Payday tab and enter fees & Interest. Save.



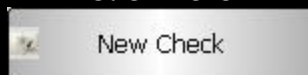
Click Here



then



Click Here



then



Select the Client

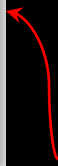


Or Just Press



Enter Check Amount
Adjust Fees
Click OK.

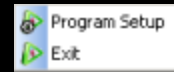
Net Payout



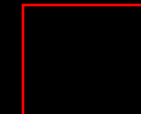
Payday Loans



Click on File



Click Program Setup



← Click the Payday tab.

Loan Schedule Name	APR	Fee	Late %	Late Fee	First Loan %	First Loan Fee
Payday Advance	0.200000	\$5.00	0.100000	\$10.00	0.050000	\$10.00
Basic Loan	0.200000	\$5.00	0.000000	\$0.00	0.000000	\$0.00

← Enter Loan names and charges. Save.

New Payday Loan

Client ID: 10 Loan Value: \$1,000.00

Name: Williams Billy Flat Fee: \$15.00

Location: [Dropdown] Percent Fee: \$.030000

Loan Date: 10/03/2008 01:05:40 Net Paid Out: \$955.00

Write Off In Default Loan Type: Payday Advance

OK Cancel

Press F3 to open a new loan screen.

- ←
1. Enter Loan Value.
 2. Adjust Fees.
 3. Select Loan Type.
 4. Press OK.

Work Areas

- Customers
- Disbursements
- Employees
- Inventory
- Pawners
- Pawns, Checks, Loans**
- Sales

Pawn # 13 Name Williams, Billy

30-Day Rate 0.00000 Loan Amount \$ 1000.00

Amount Due \$ 1000.00 Loan Type Payday Advance

Due Date 11/2/2008 12:00:00 AM

← Select Pawns, Checks, Loans. Click on the Loan Record. View Loan Details at the bottom.





Expand Services ~ Grow Sales

<u>Consignments</u>	<u>Layaways</u>	<u>Rentals</u>
Reduce risk & increase inventory with consignment.	Use PPSS to record payments and set up payment schedules.	Turn idle assets into income producers by lending them out.
PPSS has an optional Consignment Software Program, Track every aspect of each item.	Handy reports show the items on layaway, payments received, pending and past due.	Use PPSS to record and schedule rentals and know what is outstanding, due and late.



Access these bonus features from the Main Menu





Powerful
Program
Simple
Solution

PPSS Diamond and 24k support a cash drawer, receipt printer, thermal label printer, barcodes and networking.

24k supports electronic fingerprinting
and drivers license scanning.

Yet, PPSS is priced \$1,000's under other programs.

There are no add-on or hidden fees.
Phone/remote-PC help is optional.

<http://www.pawn-software.com>

bcss@mm.st

